

ARTFULSCRIBE

June 2018

ORGANISATION PROFILE: PARTNERS



John
Hansard
Gallery

NST NUFFIELD
SOUTHAMPTON
THEATRES

activate

Southampton
Cultural
Development Trust

Lighthouse
POOLE'S CENTRE FOR THE ARTS

SOUTHAMPTON
LIBRARIES

Beaulieu



BOURNEMOUTH
AND POOLE
LIBRARIES



**THE ARTS
DEVELOPMENT
COMPANY**



Mayflower
Theatre

**SOUTHAMPTON
FESTIVALS**
WWW.SOUTHAMPTONFESTIVALS.COM



**ARTS COUNCIL
ENGLAND**

/B Bournemouth
Arts by the Sea
Festival



BRIDPORT
ARTSCENTRE

UNIVERSITY OF
Southampton

ORGANISATION PROFILE: OVERVIEW

FORMED: 2011

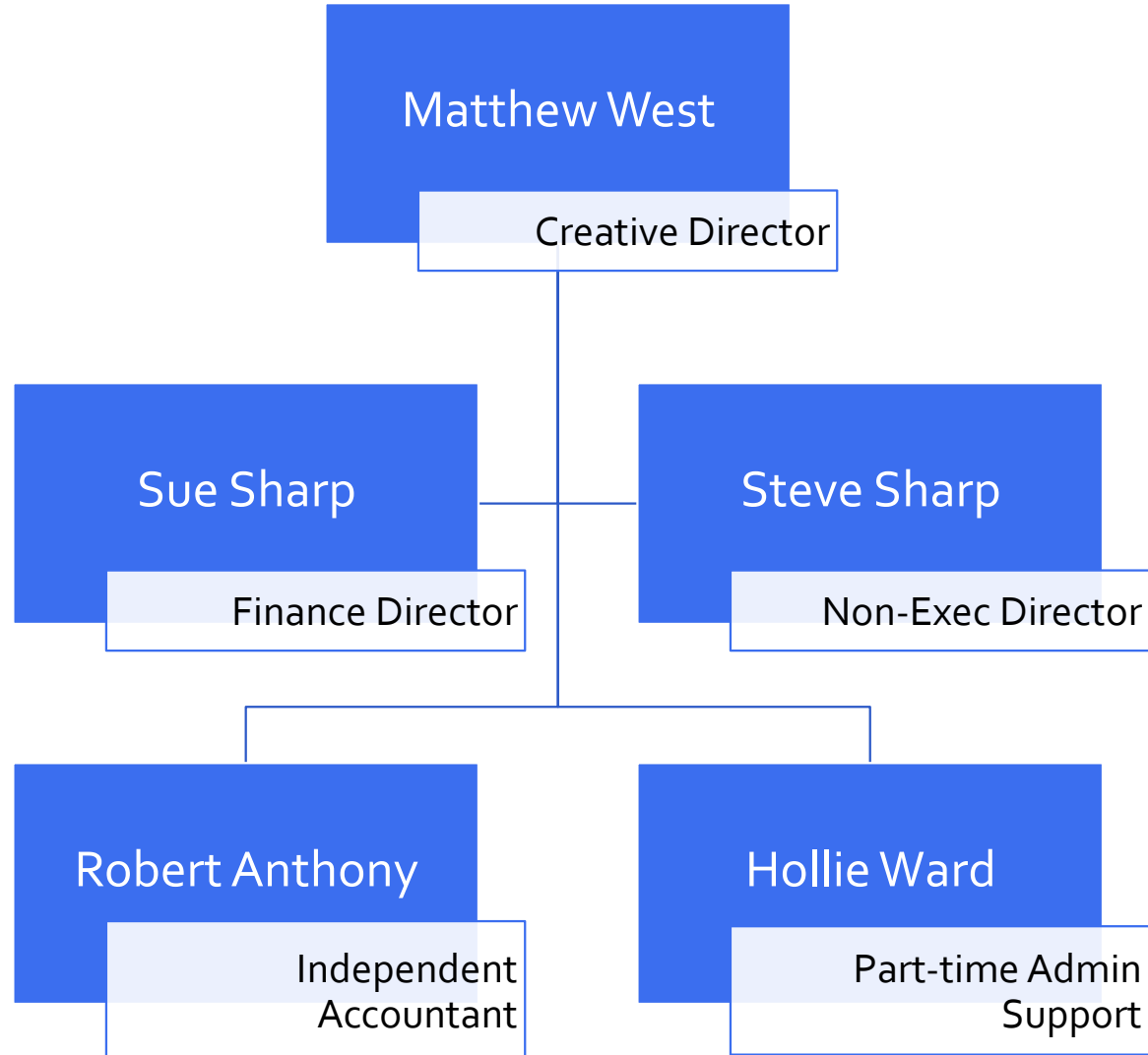
INCORPORATED: 2012

Delivered **845 workshops** with a reach from primary years to those living with dementia. Approx. **16,900 direct workshop participants, 4,500 of which are under 18.**

1,247,706 broadcast figures to date, rising to 1,404,353 BY 2020.

By 2020, ArtfulScribe will have delivered at least **1,486 paid artist days, 69 showcases and 330 residence days for 8 Writers in Residence.**

ORGANISATION PROFILE: STAFF



ORGANISATION PROFILE: FREELANCE FACILITATORS



Joanna Barnard
Women's Writing



Susmita Bhattacharya
Young Writers (Lead)



Gemma Alldred
NST Summer Project



Hollie Ward
Young Writers (Assistant)

ORGANISATION PROFILE: WRITERS IN RESIDENCE



Dinos Aristidou
Mayflower Theatre



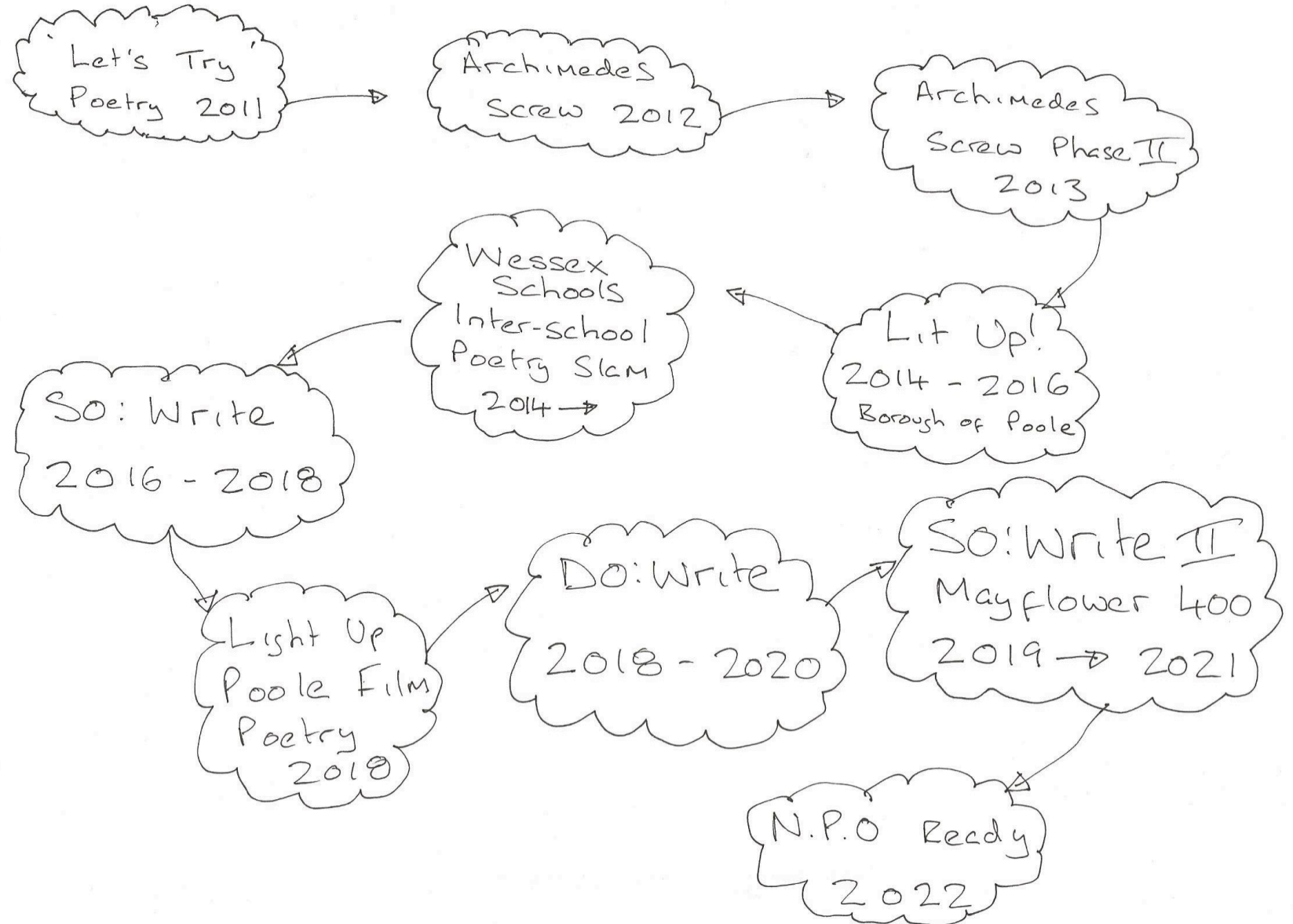
Nazneen Ahmed
Southampton Libraries



Iain Morrison
John Hansard Gallery

Timeline: Major Projects

ArtfulScribe Timeline



Project: SO:WRITE



Project: DO:WRITE



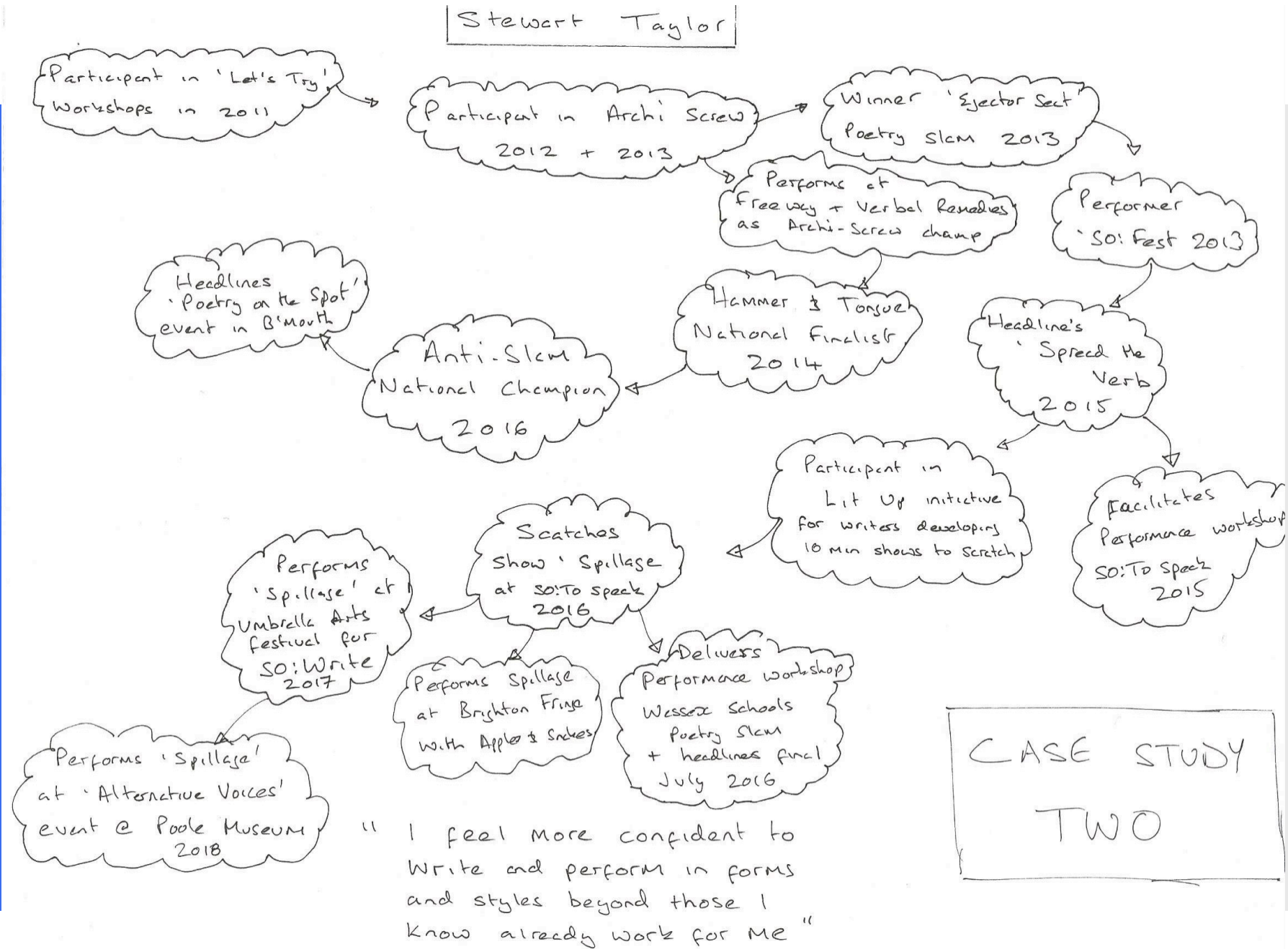
CASE STUDY: MYRIAM SAN MARCO



"I can definitely testify to the real impact funding has on the development of people in this area."

CASE STUDY
ONE

CASE STUDY: STEWART TAYLOR

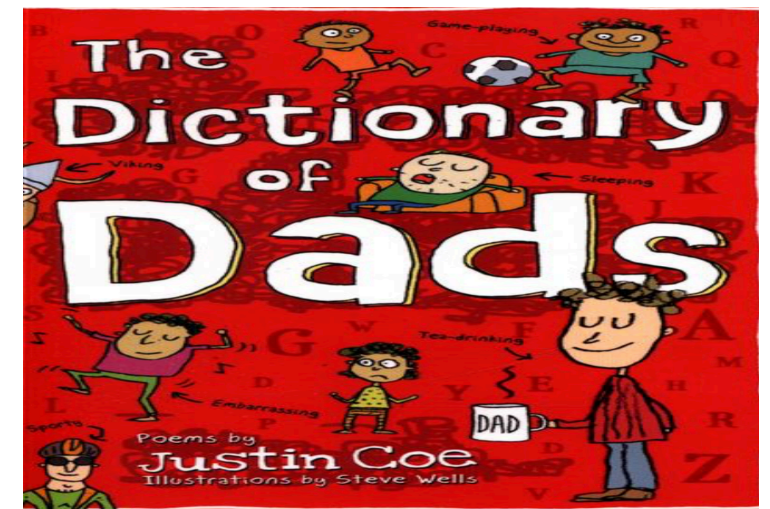
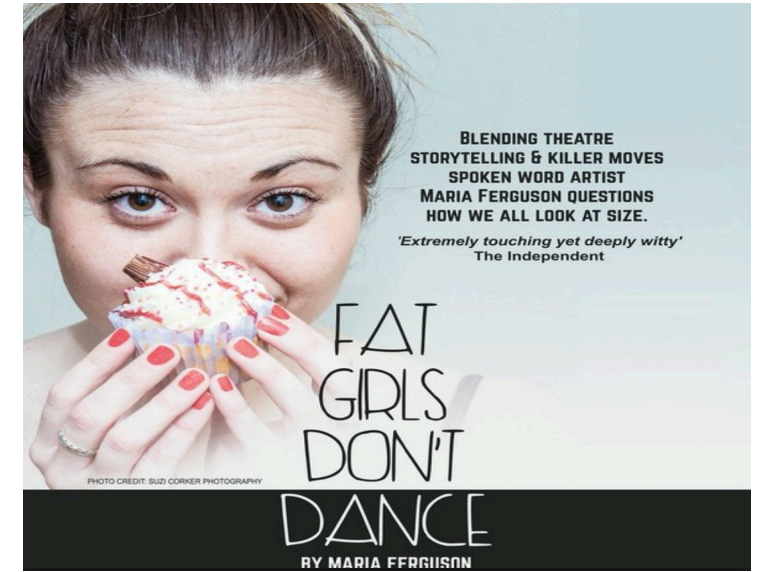


CASE STUDY
TWO

CASE STUDY: NAZNEEN AHMED



Showcases:



Venues:



ORGANISATION PROFILE: CONNECTED COMMUNITIES AND PROJECTS



God's House Tower:
A Reincarnation



Umbrella Arts
Festival



Unity 101
Urdu Poets